



**MEHR
ERFAHREN**

ARBEITSH

**VERA 8 · Engl.
Version**

mit MP3-CD

STARK

Realschule · Gesamtschul

Kompetenzbereich: Listening

M1 My town



Listen to the person speaking. While you are listening, tick (✓) the correct picture.

Listen **once** to the recording.

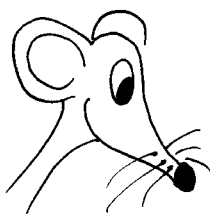
Give yourself 15 seconds at the end of the recording to complete your answers.

Look at the pictures for 15 seconds before you start.

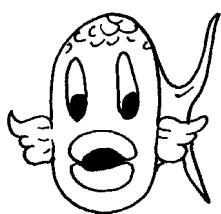
You are given one example.

1 First picture

a



b



c



d

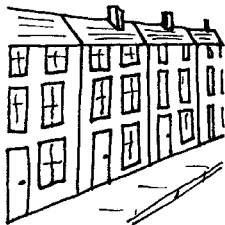


2 Second picture

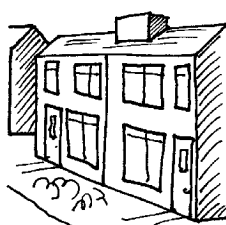
a



b



c



d

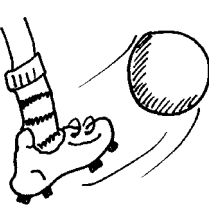


3 Third picture

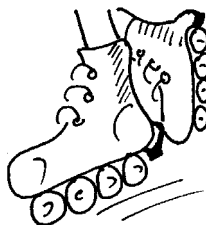
a



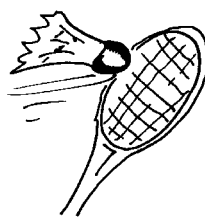
b



c



d



M5 The London Eye

Read the frequently asked questions (1 to 7) about the London Eye. Match each question to an answer (a to i). You can only use an answer once. Two answers are not needed. You are given an example to look at.



- 1 What are the capsules and how big are they?
- 2 How long is one journey on the wheel and how high does it go?
- 3 How do I get a ticket?
- 4 When are the busy times?
- 5 What can I see from the capsule?
- 6 Can I take my rucksack onto the London Eye?
- 7 Am I allowed to take my camera with me?

- a** Of course. The glass windows of the capsule do not open but you can still take photographs through them.
- b** You can book online but the form is only in English. You can also buy one at the London Eye but there are long queues there at busy times.
- c** On a nice day you get a wonderful 360° view of London. From the top of the London Eye you can see most of the famous buildings of London. Of course, we cannot guarantee the weather and, therefore, some days you get a better view than on other days.
- d** They are the 32 glass boxes that you travel in and which carry 25 people each. You can stand or sit in them to look at the view. They move very slowly.
- e** The London Eye's other name is the Millennium Wheel. It was built to celebrate the year 2000.
- f** Holidays, especially school holidays. In the summer and at weekends there are also a lot of people wanting to go on the London Eye between 11.00 a.m. and 3.00 p.m.
- g** You go once around the wheel in a capsule. This is called a 'flight'. The flight takes 30 minutes. At the top of the wheel you are 135 metres above the ground.
- h** You can get information about the flights and the things you will see in German and other languages, too.
- i** Yes, you can if it is a small one. There is a strong security check at the London Eye. If you do take one with you, remember that you will be asked to open it.

1	2	3	4	5	6	7
d						

LÖSUNG SHEFT

VERA 8 · Englisch

STARK

Realschulbildungsgang

Kompetenzbereich: *Listening***M1 My town**

I live with my family and George, our dog, in a terraced house. It's a big, old terraced house in a nice part of the town just opposite a park. My sister and I often play tennis in the park. My brother usually meets his friends there, too, when they go skateboarding.

If I go into the town centre, I get a bus. Our buses are yellow, which is something I don't like. Lots of yellow buses together look terrible. But one stops outside the post office at the end of my street – that means I don't have to walk very far. There are lots of things to do in the town – it's got lots of nice shops, especially music ones, which I like. There's also a good cinema and a nice swimming pool. Our football team, the Bears, could be better, though. I don't know why they're called the Bears but that doesn't matter. I often watch them play on a Saturday afternoon with my father.

I like my town; it's fun living here.

1 picture **c** (example)

2 picture **b**

3 picture **a**

4 picture **c**

5 picture **b**

6 picture **c**

M2 Shopping

Jim: You said that you wanted to go into town, today.

Pam: Yes, I did. I want to go to the bookshop and the supermarket.

Jim: The supermarket on a Saturday will be busy – can't we go there another day?

M3 Music in the forest

- 1 High Lodge, Thetford Forest
- 2 (Thursday) 4th/4 June
- 3 June and July
- 4 6
- 5 (Friday) 5th/5 June
- 6 by phone, over the internet
- 7 at the Visitor Centre

M4 The story of a bell

- 1 a bell
- 2 it broke
- 3 3 months
- 4 yes
- 5 Sir Benjamin Hall/a man's name/Sir Benjamin Hall's name
- 6 big and heavy

M5 The London Eye

1	2	3	4	5	6	7
d	g	b	f	c	i	a



© **STARK Verlag**

www.stark-verlag.de
info@stark-verlag.de

Der Datenbestand der STARK Verlag GmbH ist urheberrechtlich international geschützt. Kein Teil dieser Daten darf ohne Zustimmung des Rechteinhabers in irgendeiner Form verwertet werden.

STARK